



ELEVATION A1

Artist Conception Only

ELEVATION A2

Natura

by the Forest

The Merlin

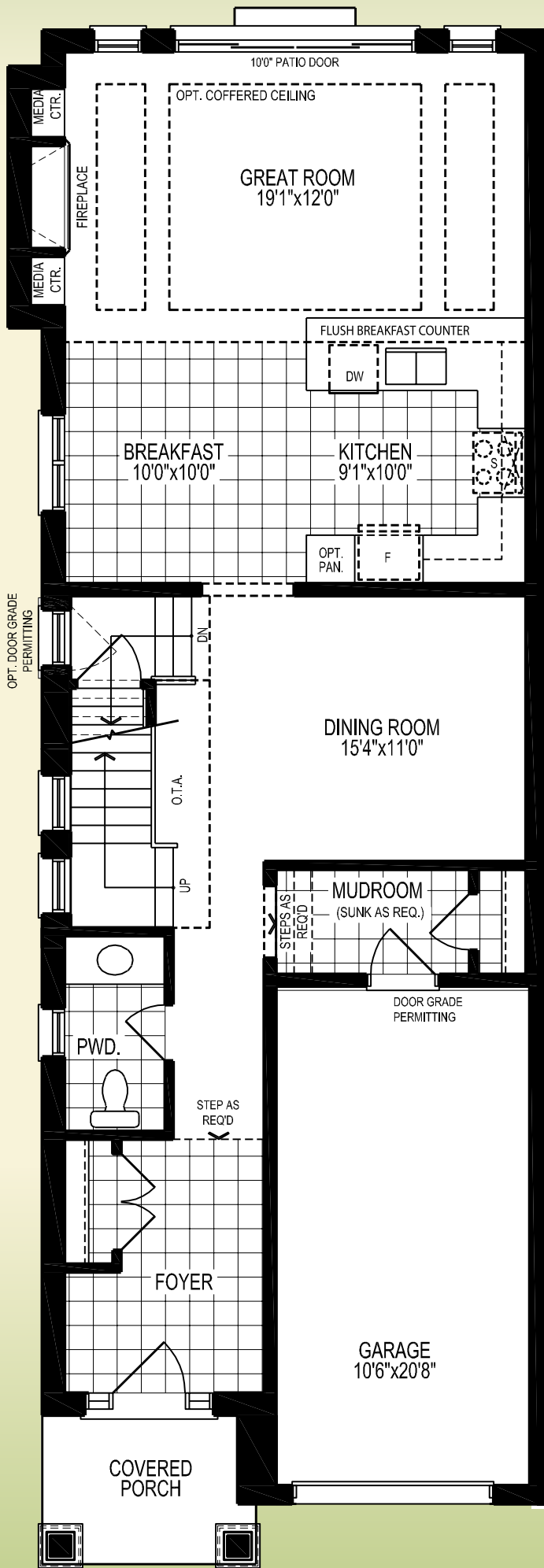
2502

2207 Sq.
Ft. | **2199** Sq.
Ft.

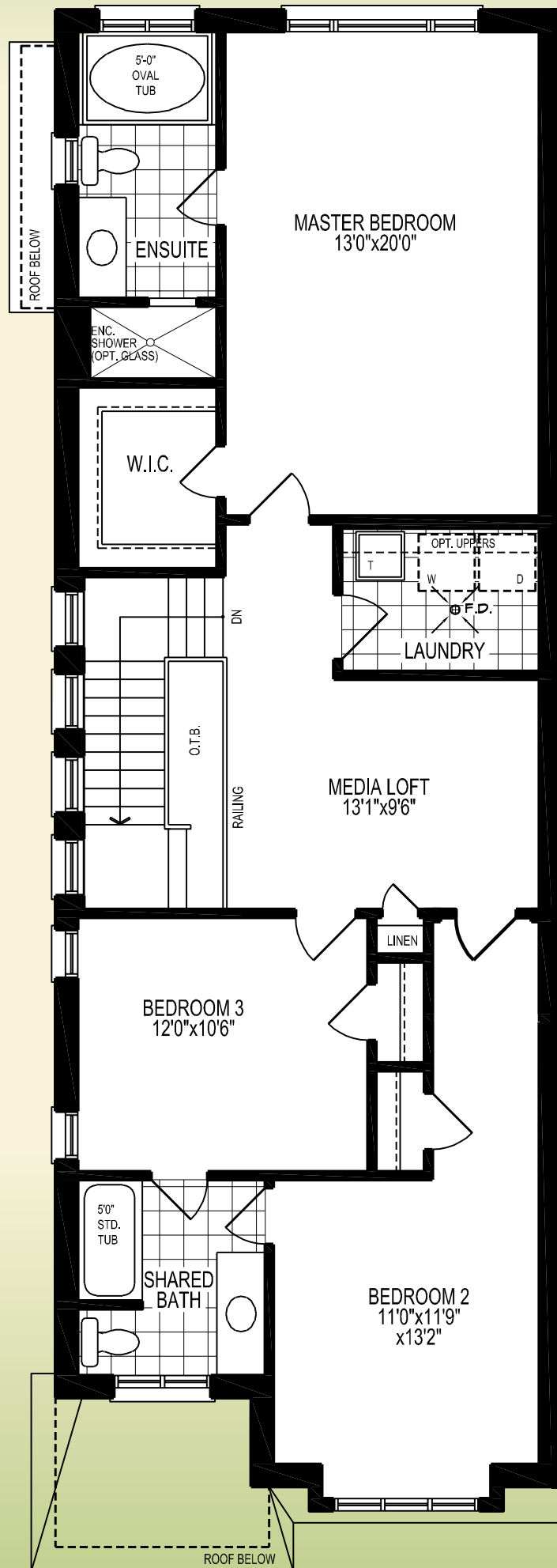
Elev. A1

Elev. A2

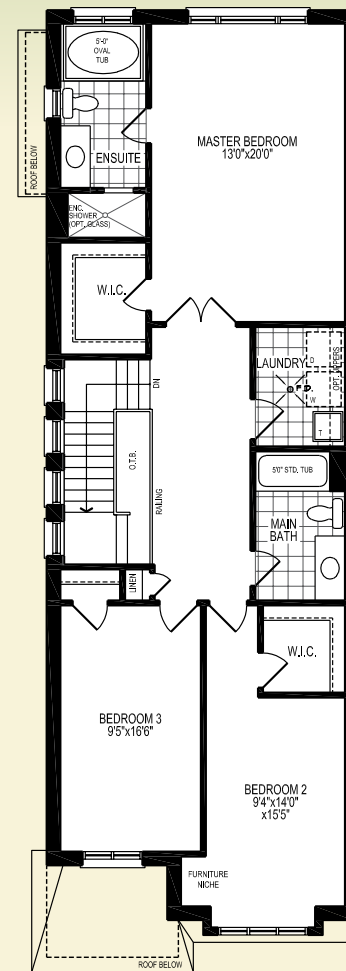




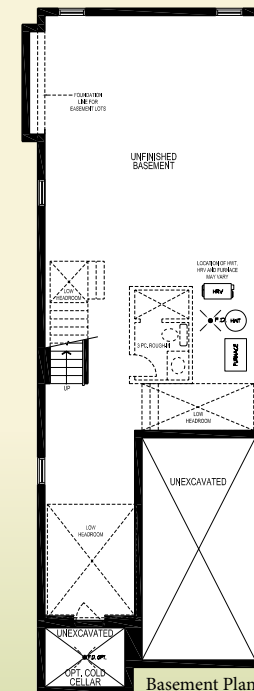
Ground Floor Plan Elev. A1



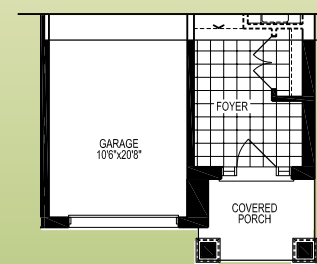
Second Floor Plan Elev. A1



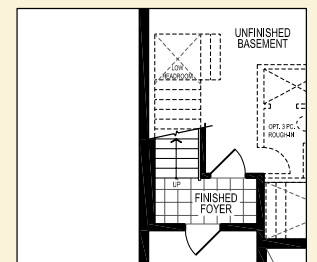
Alternate Second Floor Plan Elev. A1/A2 (Rev.)



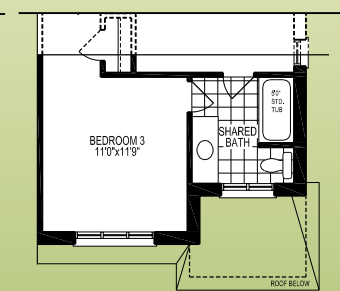
Basement Plan Elev. A1



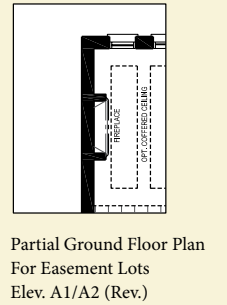
Partial Ground Floor Plan A2



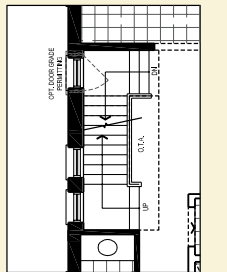
Partial Opt. Basement Plan w/ Finished Landing Elev. A1/A2 (Rev.)



Partial Second Floor Plan A2



Partial Ground Floor Plan For Easement Lots Elev. A1/A2 (Rev.)



Partial Opt. Ground Floor Plan w/ Finished Stairs to Basement & Landing Elev. A1/A2 (Rev.)

Materials, specifications, colours and floor plans are subject to change without notice. All renderings are Artist Conceptions Only. All floor plans are approximate dimensions. Media centre standard where applicable. Actual usable floor space may vary from the stated floor area. E. & O. E.



ELEVATION B1

ELEVATION B2

Artist Conception Only

Natura

by the Forest

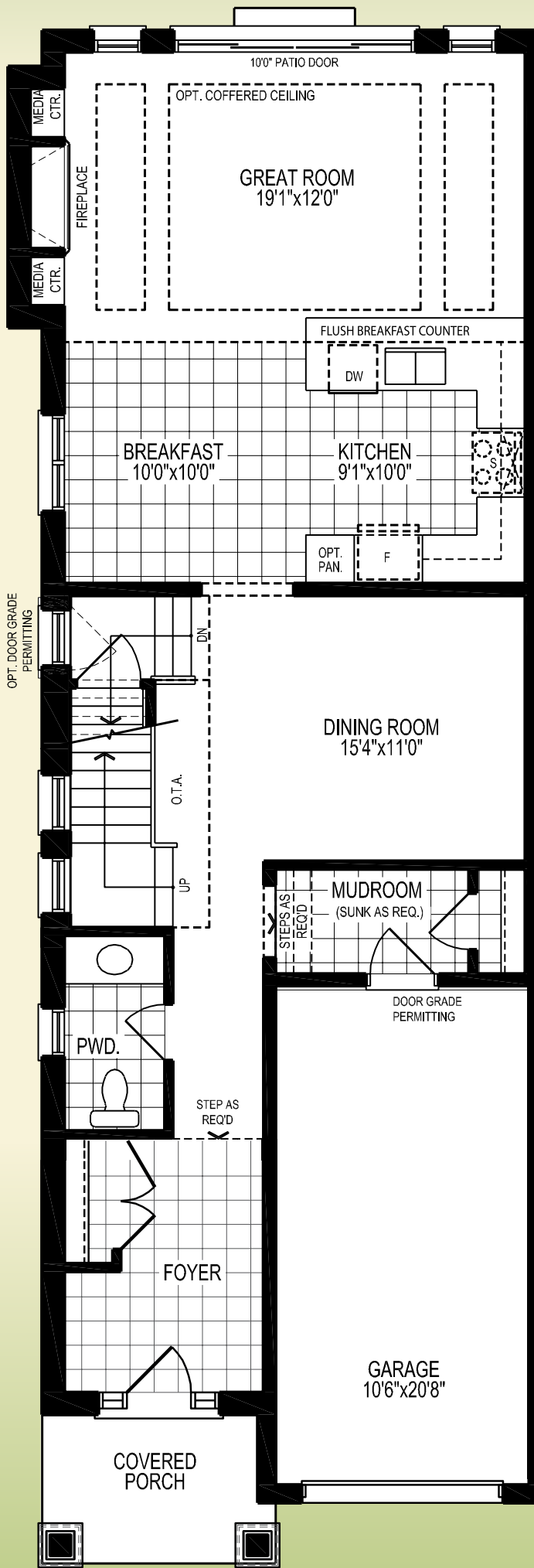
The Merlin

2502

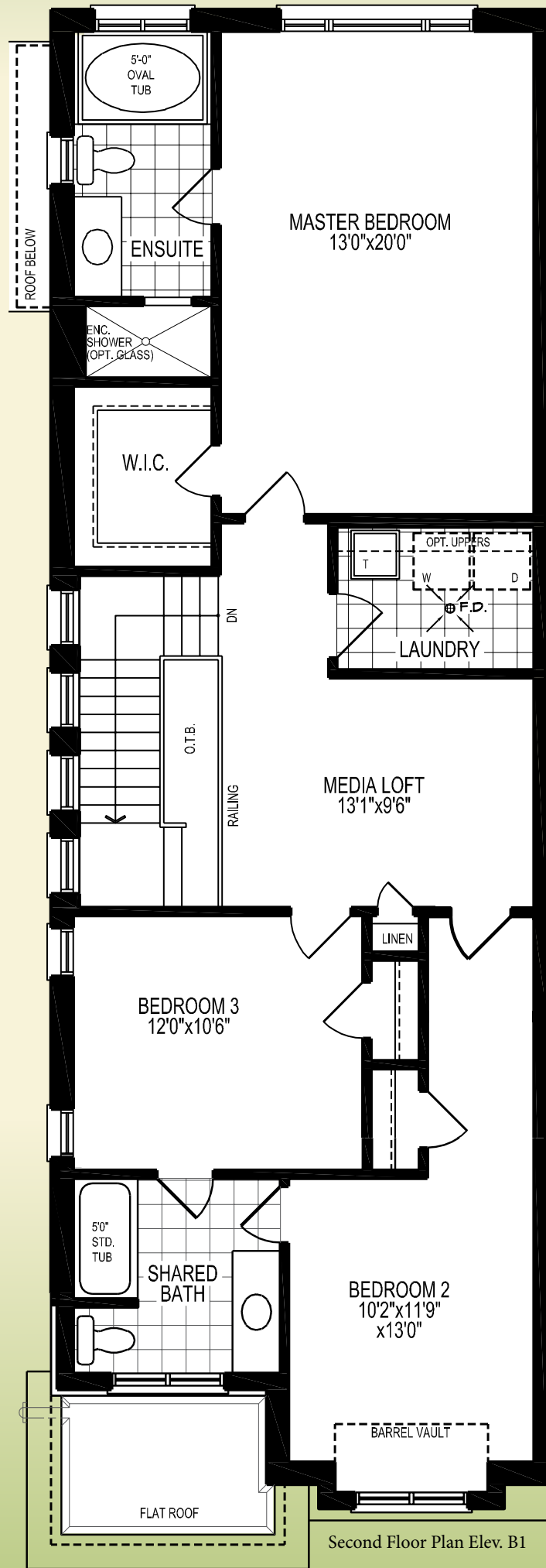
2203 Sq. Ft.
Elev. B1

2184 Sq. Ft.
Elev. B2

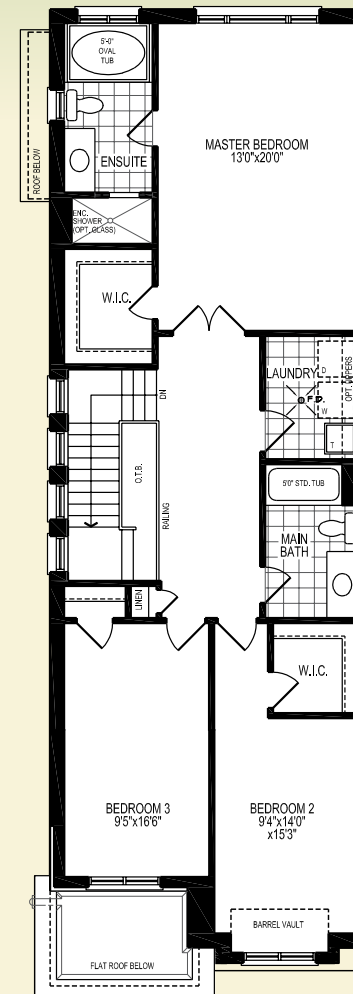




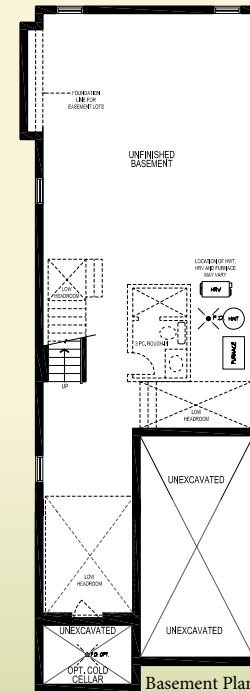
Ground Floor Plan Elev. B1



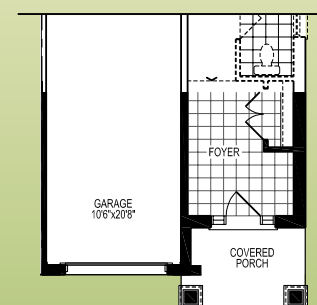
Second Floor Plan Elev. B1



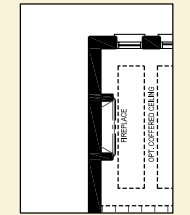
Alternate Second Floor Plan Elev. B1/B2 (Rev.)



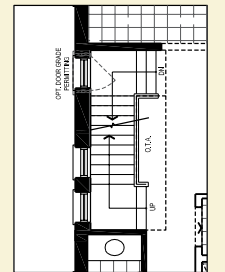
Basement Plan Elev. B1



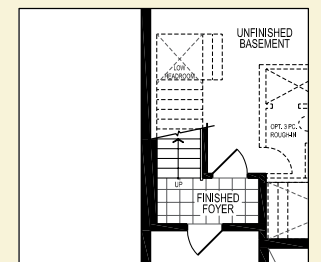
Partial Ground Floor Plan B2



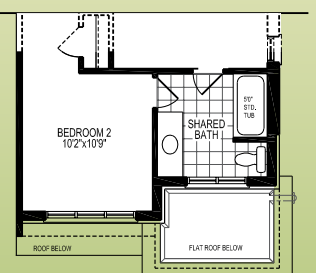
Partial Ground Floor Plan For Easement Lots Elev. B1/B2 (Rev.)



Partial Opt. Ground Floor Plan w/ Finished Stairs to Basement & Landing Elev. B1/B2 (Rev.)



Partial Opt. Basement Plan w/ Finished Landing Elev. B1/B2 (Rev.)



Partial Second Floor Plan B2

Materials, specifications, colours and floor plans are subject to change without notice. All renderings are Artist Conceptions Only. All floor plans are approximate dimensions. Media centre standard where applicable. Actual usable floor space may vary from the stated floor area. E. & O. E.